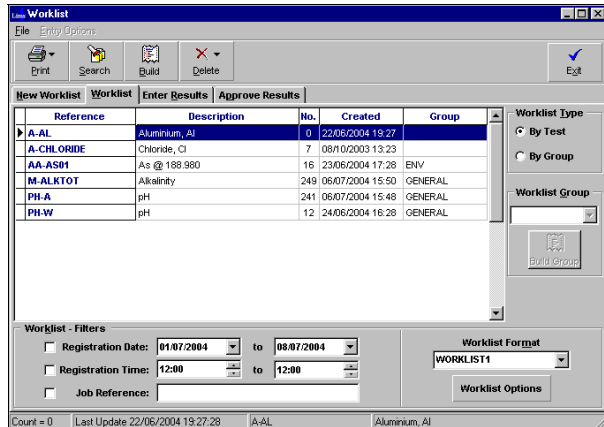


WORKLISTS BY TESTS

Overview

On selection of the Worklists (By Test) Item from the Operations Menu, a tabbed notebook providing access to the Worklist options is displayed. A Worklist is used to locate all instances of a specific Test that requires Entry of a Result.

Once a Test has been selected for assignment of a Worklist, the entire active Registration database is searched to locate instances of this Test where Results have not been entered. A Worklist for these Tests is then presented to the operator either as a printout of a Worklist Report or displayed in a Worklist table.



The screen on the left provides a listing of all Tests for which results entry are required in the system.

On selection of a Test for results entry the screen shown below is used to enter results. A hard copy of the Worklist may also be printed in a custom format as developed in the Lims1 Report Format Generator.

Worklist Test List Screen

Reference	Sample Description	Due Date	Sm#	Rep	Status	Result
J01/0033	Sm 1	15/10/2003	1	0	No Entry	
J01/0033	Sm 1	15/10/2003	1	1	No Entry	
J01/0033	Sm 2	15/10/2003	2	0	No Entry	
J01/0033	Sm 3	15/10/2003	3	0	No Entry	
J01/0033	Sm 3	15/10/2003	3	1	No Entry	

List of Tests for result entry. Each Test is identified by a Job Reference and Sample Number.

Worklist Tabbed Notebook

- The **New Worklist** Page displays a list of all established Tests. The list is used to build a new Worklist based on the Test selected.
- The **Worklist** Page contains a listing of Worklists that have been established and are waiting for Entry or Approval of Results. Functions available from the Worklist Page enable the Re-building, Filtering, Previewing or Printing of an existing Worklist. Deletion of Tests from the Worklist may also be performed from this page.
- Once a Worklist has been selected from the Worklist Page, the **Enter Results** Page contains a table of all Tests awaiting Results Entry for that Worklist. As Results are entered, the entered value is checked against pre-established limits. The Result and current Status of the Result are then displayed.
- Results that are entered in the Enter Results Table are held in temporary files until checked and Approved. The **Approve Results** Page is used to approve individual Results or all Entered Results in the list. The results once approved, are then transferred to the main Lims1 Results Database Table.