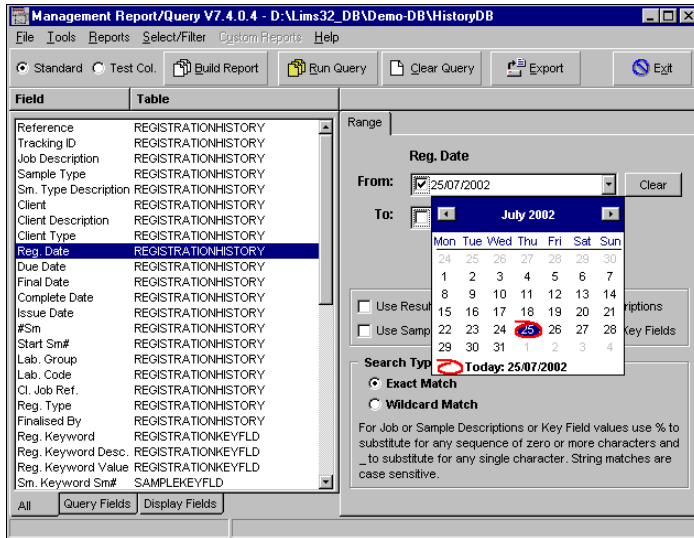


## MANAGEMENT REPORTS

### Overview

Data for work which has been finalised (approved for release) is copied to the Lims1 Historical Database for long term storage and access. The Query Module is a highly flexible system for accessing this data and creating statistical reports or exporting data to 3rd party software.

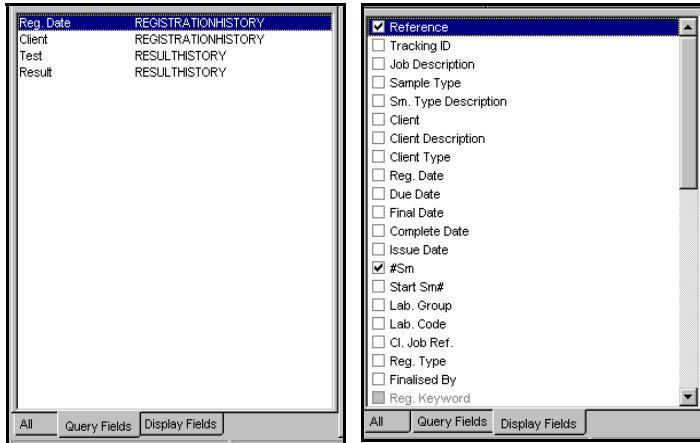


### Selection of Query Filters

Query Module forms and lists provide the end user with the ability to access database information by selecting specific 'data fields' and ranges for retrieval of data as well as creating a range of reports based on this data.

The form shown on the left includes a listing of all database fields. The user can select a number of these fields to create a report or to export the data set.

The style of report will depend on the type of data selected and type of report required.



### Filters & Report Fields

The tabbed notebook on the far left shows fields selected for filtering...

Dates: 1/3/2001 - 1/6/2001

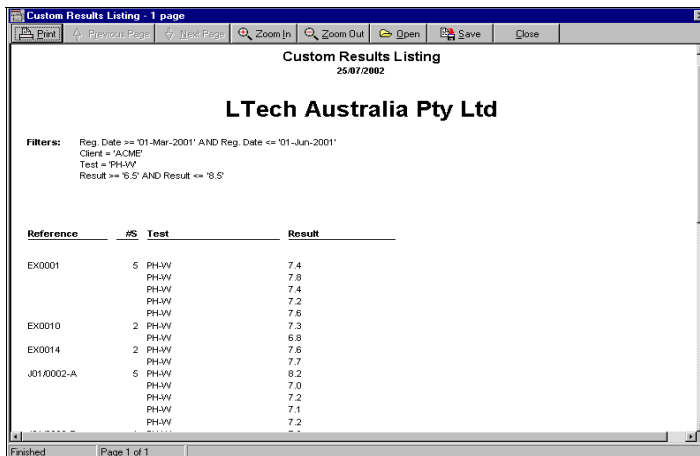
Client: ACME

Test: PH-W

Result 6.5 - 8.5

The tabbed notebook on the near left shows fields selected for printing or export including...

- Job Reference
- Sample Number
- Test
- Result



### Reports

The Report Heading includes a list of all filters applied to the database to create the report. The report listing includes fields selected for printing.

The data as shown, could also have been directly exported to MS-Excel, other 3rd party software or to a corporate database.