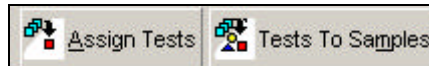


JOB REGISTRATION - Modifying Default Settings

Customising the Job Registration

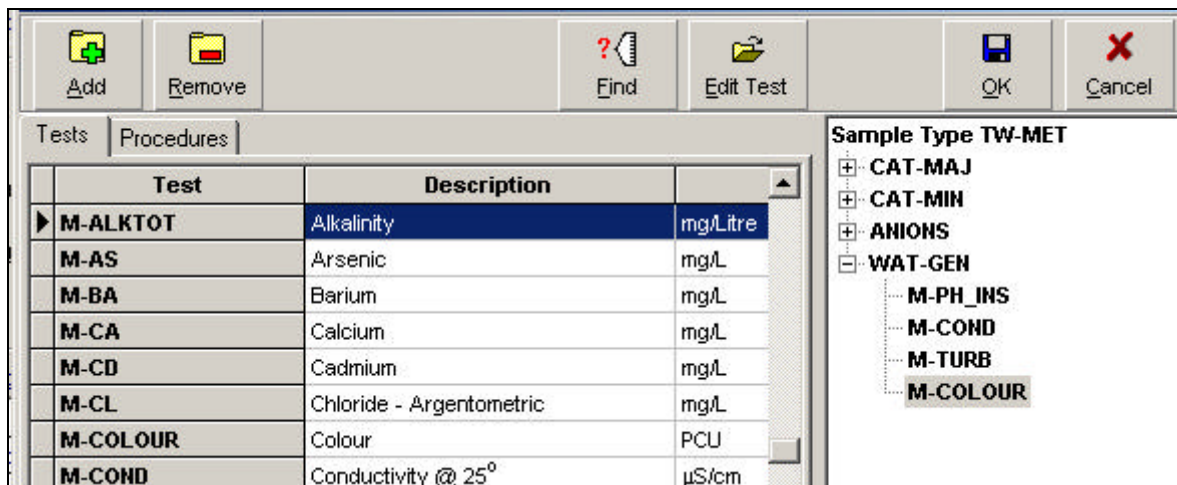


Once a Job Registration has been established the initial conditions as assigned by the Sample Type may be modified to suit specific requirements for the work to be undertaken.

Note: The system is designed so that *modifications made are specific to the current Job Registration and do not effect the underlying Sample Type.*

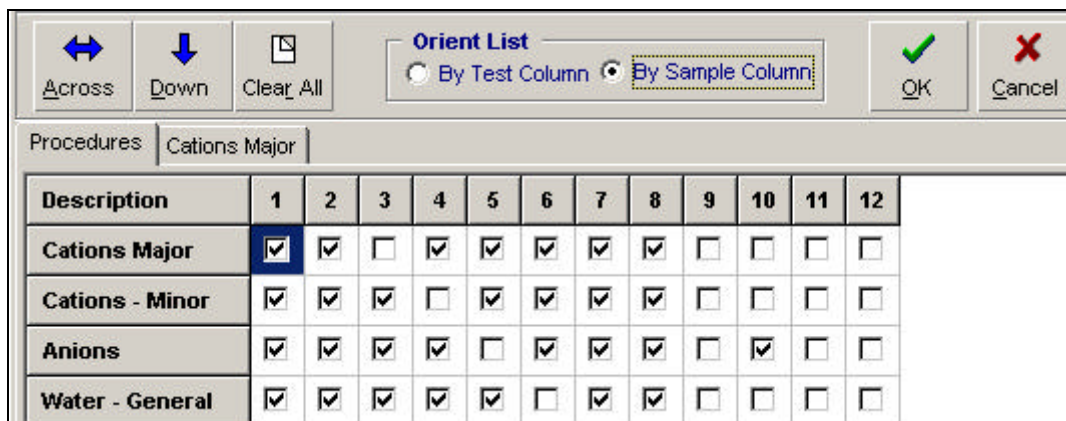
Assigning Tests

Selecting the **[Assign Tests]** button at the top of the Registration Screen provides access to the Registration Tests Assignment Form which can be used to add or remove Tests from the Registration as required. For addition of Tests the tests are selected for the Setup Tables -Tests Library.



Assigning Tests To Samples

Selecting the **[Tests to Samples]** button at the top of the Registration Screen provides access to a Tests Assignment Matrix which allows individual Tests (or Test Procedure Suites) to specific samples logged into the system.



Assigning Tests To Samples

Selecting the **[Tests to Samples]** button at the top of the Registration Screen provides access to a Tests Assignment Matrix which allows individual Tests (or Test Procedure Suites) to specific samples logged into the system.

Other Registration related Functions

Additional information related or linked to a specific Job Registration may include...

- Registration Comments: Unlimited comments related to log-in of work.
- Report Comments: Unlimited comments related to sample processing and results.
- Sample Preparation: Sample Preparation Procedures to be use.
- Attachments: Unlimited attachments (documents, images, etc.) related to the work.