

Lims1 HISTORICAL DATABASE

Overview

As Job Registrations are approved for release in the core Lims1 system all Registration information related to the Registration is automatically copied into the Lims1 Historical Database for long term storage and retrieval.

Note

Because this data has been saved to a separate database the core Lims1 database may be regularly purged of data no longer required. Purging of the Active Database maintains a relatively constant size for the database to optimise database access times.

Lims1 dbQuery Module

The dbQuery Module is a highly flexible system for accessing this data and creating statistical reports or exporting data to 3rd party software from the Lims1 Historical database.

The screenshot shows the 'Management Report/Query V7.3.0.6' interface. On the left, a table lists fields for the 'REGISTRATIONHISTORY' table, including Reference, Tracking ID, Job Description, Sample Type, Sm. Type Description, Client, Client Description, Client Type, Reg. Date, Due Date, Final Date, Complete Date, Issue Date, #Sm, Start Sm#, Lab. Group, Lab. Code, Cl. Job Ref., Reg. Type, Finalized By, Reg. Keyword, Reg. Keyword Desc., Reg. Keyword Value, Sm. Keyword Sm#, and SAMPLEKEYFLD. On the right, there are search filters for 'Reference' with 'From' and 'To' fields, and checkboxes for 'Use Results', 'Use Sample Descriptions', 'Use Sample Key Fields', and 'Use Registration Key Fields'. The 'Search Type' is set to 'Exact Match'.

Performing Queries

The form shown on the left includes a listing of all database fields. The user can select a number of these fields to create a report or to export the data set.

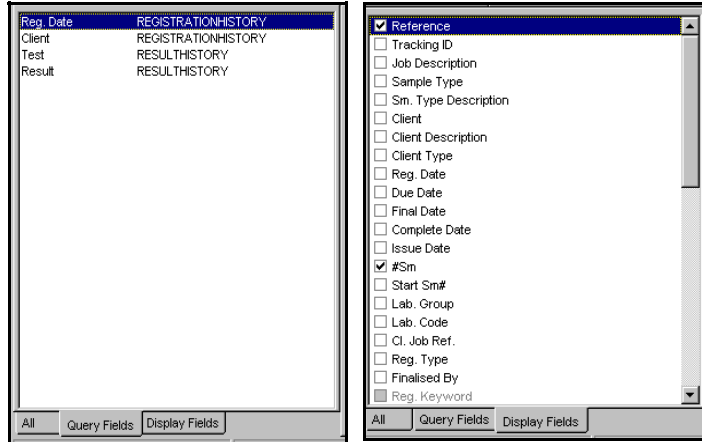
The style of report will depend on the type of data selected and type of report required.

This screenshot shows the same interface as above, but with the 'Reg. Date' field selected in the field list. The 'Range' section for 'Reg. Date' is active, showing a 'From' date of 25/07/2002 and a 'To' date of 25/07/2002. A calendar pop-up is visible for July 2002, with the 25th highlighted. The 'Search Type' remains 'Exact Match'.

Selection of Query Filters

Query Module forms and lists provide the end user with the ability to access database information by selecting specific 'data fields' and ranges for retrieval of data as well as creating a range of reports based on this data.

dbQuery Module...cont.



Filters & Report Fields

The tabbed notebook on the far left shows fields selected for filtering...

Dates: 1/3/2001 - 1/6/2001

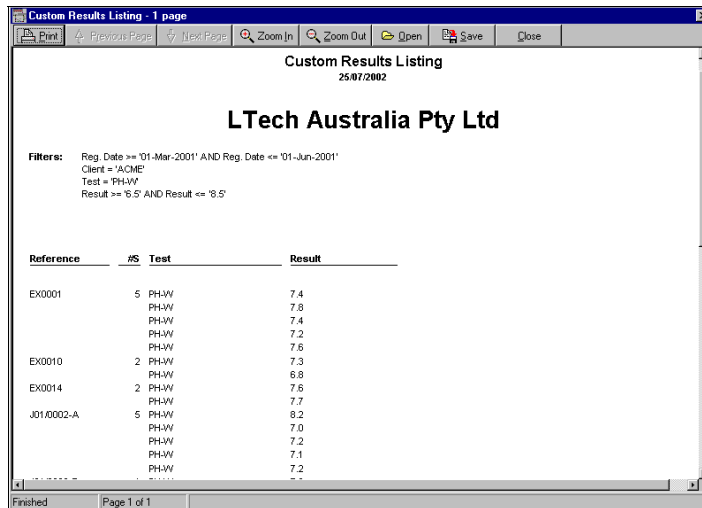
Client: ACME

Test: PH-W

Result 6.5 - 8.5

The tabbed notebook on the near left shows fields selected for printing or export including...

- Job Reference
- Sample Number
- Test
- Result



Reports

The Report Heading includes a list of all filters applied to the database to create the report. The report listing includes fields selected for printing.

The data as shown, could also have been directly exported to MS-Excel, other 3rd party software or to a corporate database.